



Monday 1 November 2010

# Wallpaper\*

\*DESIGN INTERIORS FASHION ART LIFESTYLE



Home 01 Gallery 02 Video 03 Architecture 04 **Interiors 05** Fashion 06 Art 07 Travel 08 Cars 09 Lifestyle 10 Technology 11 Events 12 Subscribe 13

Interiors

[Subscribe to Wallpaper\\* magazine](#)

A Jim Drain-designed bench for the Cumulus Studios' affordable 'b-line' collection

## Cumulus Studios launches b-line bench collection

INTERIORS

By Nancy Alsop

Garden furniture - aside from the obvious prerequisites of functionality and weather-resistance - need never be dull. This was the founding principal of New York-based Cumulus Studios when it launched in 2008 under the direction of landscape architect Nathalie Karg, who increasingly found that however spectacular her creations, clients were invariably stumped as to how to furnish their oases. Karg's solution? She would invite her favourite artists - both established and emerging - to envisage and create objects for the great outdoors. The results include parasols by Jan Mancuska, a 'Hare swing' by Adam McEwan, a birdhouse by Allan McCollum and a wheel-along croquet set by Mark Dion.



[See more B-line Benches from Cumulus Studios](#)

So far, so imaginative. And now, three collections in, Karg is the brains behind an additional series launched under the banner title of the 'b-line' bench. Once again calling on the vision of contemporary artists, she invited Tom Burr, Jim Drain, Jason Meadows and Rirkrit Tiravanija to each design a garden bench that would be both beautiful and affordable. And we're not the only ones to rate them; they've been showcased at the Tanya Bonakdar Gallery in New York, as

### INFORMATION

#### Website

<http://www.cumulus-studios.com>

#### Telephone

tel: 1.212 563 7821

#### Address

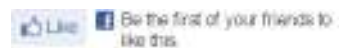
Cumulus Studios  
325 West 38th Street  
Suite 1601  
New York NY 10018

#### Bookmark

[Digg](#)  
[Delicious](#)  
[Reddit](#)  
[Stumbleupon](#)

#### Print this item

[Subscribe to Wallpaper\\*](#)  
[Wallpaper\\* News feed](#)  
[Add Wallpaper\\* Widget](#)  
[Follow us on Twitter](#)  
[Facebook fan page](#)



well as the Blum & Poe in Los Angeles. Watch this space: there are more designs soon-to-launch from the likes of Sam Durant, Ugo Rondinone, Jack Pierson and Rob Wynne.

24 September 2010 | [Interiors](#)

[Subscribe to Wallpaper\\* magazine](#)

Sign up for our free weekly newsletter

\*

## Wallpaper\* Video



The Lightline of Gotham by Seeper



Powers of Ten by Charles and Ray Eames



Lacoste shirt by Li Xiaofeng



ThinBike - by Schindelbauer and Graham Hill

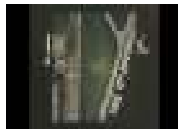


Urban Art Projects, Brisbane

### LATEST VIDEOS



The Lightline of Gotham by Seeper



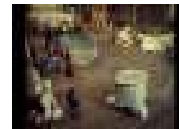
Powers of Ten by Charles and Ray Eames



Lacoste shirt by Li Xiaofeng



ThinBike - by Schindelbauer and Graham Hill



Urban Art Projects, Brisbane

### LATEST INTERIORS GALLERIES



LLove exhibition, Tokyo



'Small show, Huge talent', Sotheby's, London



'Cassina revives Le Corbusier furniture



Frieze Art Fair 2010: Gallerists' Tables



Pavilion of Art & Design London 2010

### LATEST INTERIORS ARTICLES



LLove exhibition, Tokyo



'Small show, Huge talent', Sotheby's, London



Cassina revives Le Corbusier furniture



Frieze Art Fair: Gallerists' Tables



Pavilion of Art & Design London 2010